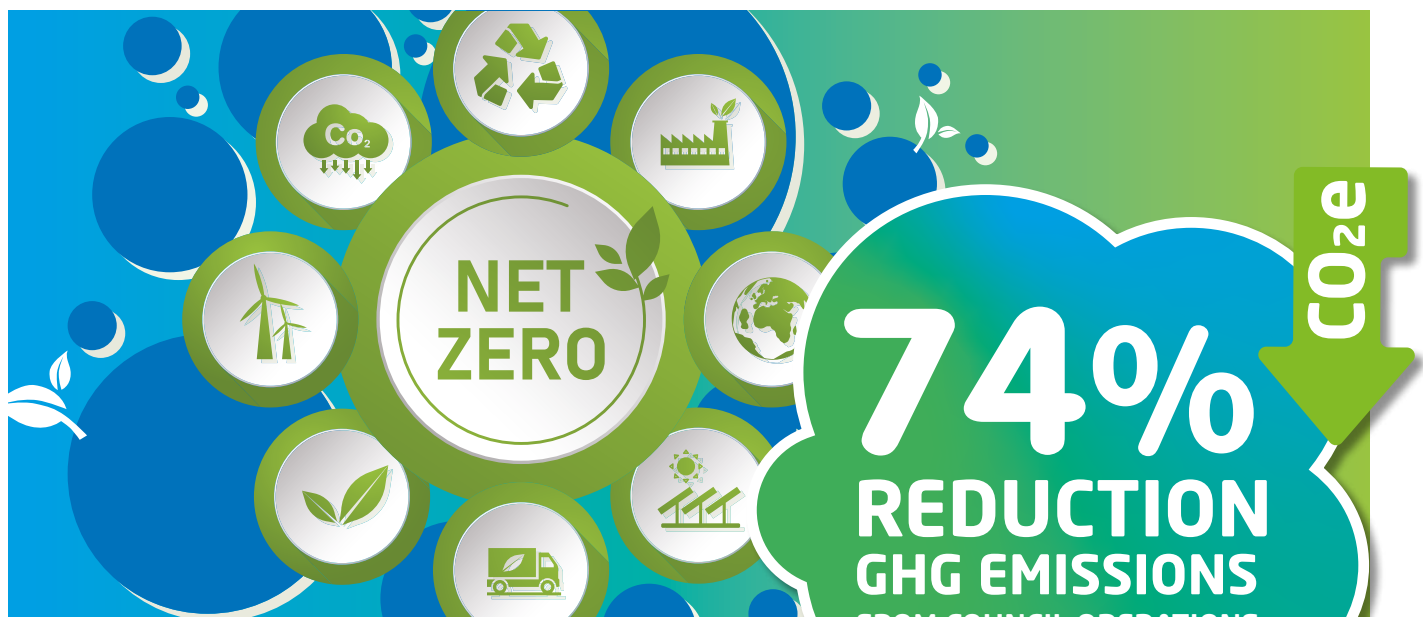


Environmental Performance 2022-23 - Summary



Leicestershire County Council's Performance

Greenhouse Gas Emissions

Since **2008-09** the County Council has reduced its operational greenhouse gas emissions (GHG)¹ by almost **74%**. In **2022-23** the Council reduced its greenhouse gas emissions by **7.2%** compared to **2021-22**.

08-09	35,778t
21-22	10,127t
22-23	9,395t

**NET
ZERO**
LEICESTERSHIRE

Net Zero
BY 2030

Main Sources of County Council Greenhouse Gas Emissions

BUILDINGS

35%



TOTAL GREENHOUSE GAS EMISSIONS

2022 - 23 FROM COUNCIL OPERATIONS

BUSINESS TRAVEL

29%



13%



FLEET VEHICLES

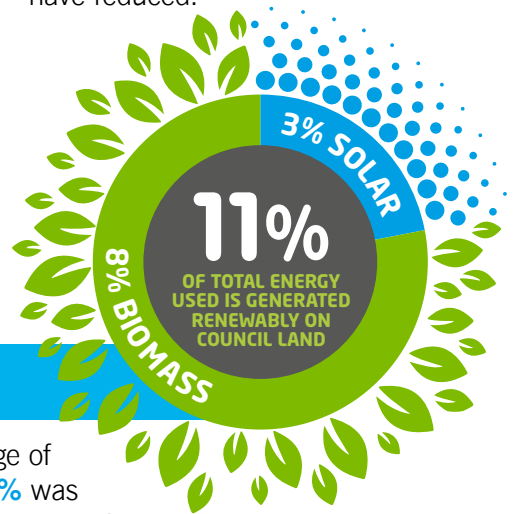
STREET LIGHTING & TRAFFIC SIGNALS

22%



WATER & WASTE <1%

The main sources of greenhouse gas emissions for the County Council in **2022-23** were our buildings, fleet, streetlighting & traffic signals and staff business travel. All the **main sources** saw a **reduction compared to 2021-22**, except **business travel** which saw a **rise** of over **5%**. Overall, emissions from vehicles (fleet and business travel) have increased as a proportion of total emissions, while building emissions have reduced.



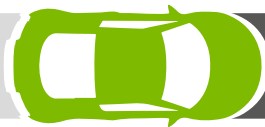
Renewable Energy

The amount of renewable energy generated on council land, as a percentage of total energy consumed, rose slightly to almost **11%** in **2022-23**. Of that, **3%** was generated from **solar** power and **8%** from a **biomass** (woodchip) boiler. The generation of on-site renewable energy avoided **355 tCO₂e** of emissions – equivalent to **3.8%** of the council's emissions. With the repair of faults and upgrades of the solar PV system as well as improvements to the biomass boiler, renewable energy generation is expected to increase in the coming years.

Business Mileage

REDUCED BUSINESS MILES BY

7.6m
2013 - 14



3.3m

4.3m
2022 - 23



The Council has reduced its business miles by **3.3 million miles** since **2013-14** saving over **1,180 tonnes** of greenhouse gas emissions. Business mileage increased by **240,000 miles (6%)** compared to **2021-22** largely due to the continued Covid bounce-back.

Office Recycling

The County Council recycled **51%** of its total office waste² in **2022-23**. Recycling performance fell by about **8%** compared to **2021-22** with the total amount of waste generated falling by **8%** to **250 tonnes**. There was a particular decline in waste paper, metal and ICT equipment and an increase in glass and food waste.



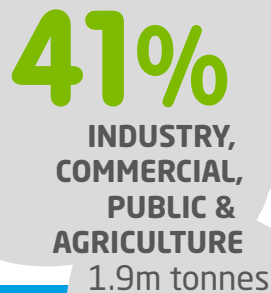
Footnotes:

¹ The GHG emissions consist of a mix of gases in addition to carbon dioxide, including methane, nitrous oxide, and hydrofluorocarbons. These make up our overall greenhouse gas figure, which is expressed as carbon dioxide equivalent or CO₂e. GHG reporting follows HM Government's Environmental Reporting Guidelines.

² Excludes waste from operational activities e.g. highways maintenance and forestry waste.

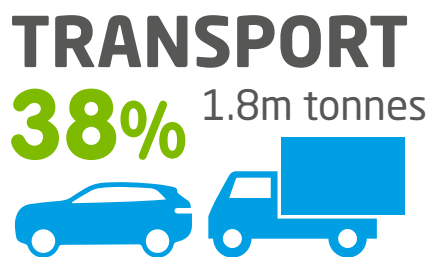
Leicestershire Environmental Performance

Leicestershire's Carbon Emissions



Based on figures provided by the Government³, the carbon emissions for Leicestershire were **4.85 million tonnes** in **2021**. Emissions are split between industrial, commercial, public sector & agriculture, transport, and domestic sources. Emissions have reduced by **28%** between **2005** and **2021**.

**TOTAL CO₂e
EMISSIONS 4.85m**
FOR LEICESTERSHIRE



**CO₂e
EMISSIONS
PER PERSON IN
LEICESTERSHIRE**
6.8
TONNES
2021

2005 10.8
TONNES

Carbon Emissions Per Person

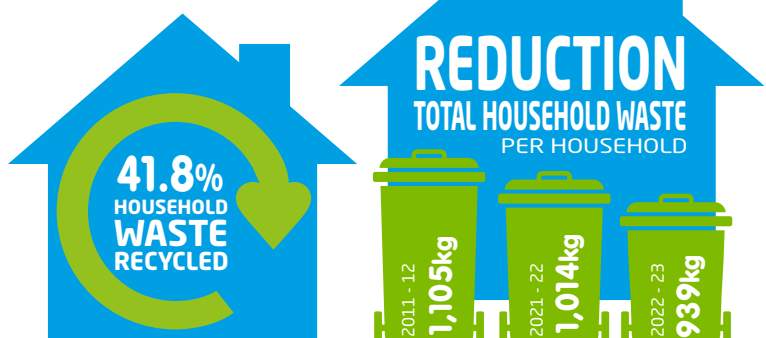
The Government figures show that in **2005** each person in Leicestershire emitted the equivalent of **10.8 tonnes** of carbon (CO₂e). This reduced to **6.8 tonnes** in **2021** with a current target of reducing this to **1.6 tonnes** by **2035**.

**2035
TARGET 1.6**
TONNES

Household Waste & Recycling

There has been a steady decline in the total household waste generated per household since **2011-12**, with total household waste per household falling from **1,014 kg** in **2021-22** to **939 kg** in **2022-23**, a reduction of over **7%**.

The amount of household waste recycled in Leicestershire in **2022-23** was **41.8%**.



Footnote:

³ Data is provided by the Department for Energy Security & Net Zero for all UK regions and is two years in arrears. This includes emissions from industrial, commercial, public sector, agriculture, transport and from domestic sources (i.e. homes). More information on the figures can be found here www.gov.uk/government/statistics/final-uk-greenhouse-gas-emissions-national-statistics-1990-to-2021

Projects on the ground

Working Together with Solar Together

Solar Together sees Leicestershire Councils working together as part of 'Green Living Leicestershire', to facilitate group buying initiatives which have contributed an **additional 1.6MW of renewable energy** in Leicestershire. Householders across Leicestershire have **saved thousands of pounds on solar panels** thanks to the latest round of the group buying initiative. The Solar Together 2022 Scheme saw a total of **460 installations** across the county resulting in an estimated **7,385 tonnes of carbon reduction over the next 25 years**.



Residents sign up for free on their Council websites and are entered into an auction. The scheme is run through group buying experts iChoosr, removing the burden of research for householders looking to install solar panels and battery systems. Over the two years of the scheme some **£4.3 million** has been invested in renewable energy across Leicestershire.



Parish and Community Net Zero Toolkit

Town and Parish Councils and local groups have an important role to support **Net Zero delivery** and help achieve this goal due to their **close proximity to local communities** and their understanding of local needs and priorities.

Environment Matters

Want to keep informed of what is happening within Leicestershire County Council and beyond on **environmental and waste matters**? Why not sign up to get an electronic copy of our Environment Matters newsletter – Click on this link for more details: [Environment Matters sign up](#).

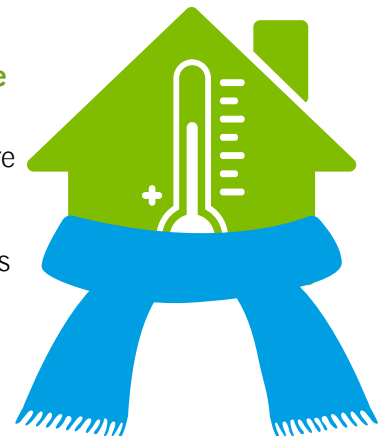
Warming Homes and Saving Households Money

The **Home Upgrade Grant** is a government backed scheme delivered by local authorities to improve home energy efficiency. The aim of the scheme is to **improve the warmth and comfort** of homes that **do not have mains-gas heating**, whilst **also reducing energy bills, carbon emissions and levels of fuel poverty** across the county.

The council's **Warm Homes Service** has delivered a number of projects over the last 3 years, including **£2.5m of Sustainable Warmth funding to 250 households** across the county. The service is currently delivering **£6m of Home Upgrade Grant funding** to off-gas households through to **March 2025**.

Consistent delivery has had demonstrable impact on the number of homes now meeting an above average **EPC rating of band C or higher** in the county, having accelerated over the period from a rolling average of **29% in June 2019 to 53% in June 2023**.

The Green Living Leicestershire collaboration has recently **successfully secured £6.6m** of funding to retrofit non mains gas heated homes via the **Home Upgrade Grant phase 2**. Check for eligibility and apply [here](#).



Leicestershire County Council is committed to working with Leicestershire residents and organisations to become a **Net Zero county by 2045** and has developed the **Parish and Community Net Zero toolkit** to help kick-start community action, including helpful tips, advice and guidance on how to **identify sources of carbon emissions** in their local area, setting **clear reduction targets**, getting the community involved in supporting initiatives, and signing up to the **Leicestershire Climate and Nature Pact**. More information on the toolkit can be found [here](#).

Climate Change Reading Lists

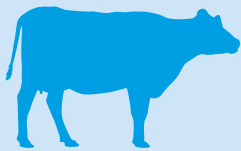
Interested in learning more about Climate Change? Why not use our climate change booklists. Enjoy learning about climate change from either the children's or adult booklists. For more information click [here](#).

Action For Nature Performance

Hectares of Council Land in Better Management for Nature

Total Land in Better Management
for Nature 2022-23

3,854
hectares



County Farms
2,164
hectares

Highway
Verges

1,068
hectares



Country Parks
585 hectares

Playing Fields **37** hectares 

Wildlife Verges



2022 - 23

69
verges



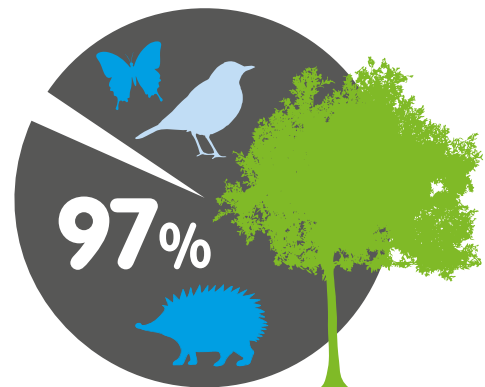
51 parishes participating

These metrics are **currently under development** and are seeking to show how much of council land is in **better management for nature**, in area terms and as a percentage of the total council land that could be in better management for nature.

Only land where there is a **conscious decision made to manage the land in a way that protects or enhances nature** is included. The figures do not say anything about the quality of that land from a nature perspective. The figures presented are based on the **current available data** so are not the final figures but are **indicative of the position**. Further refinement of the data will be carried out on an ongoing basis.

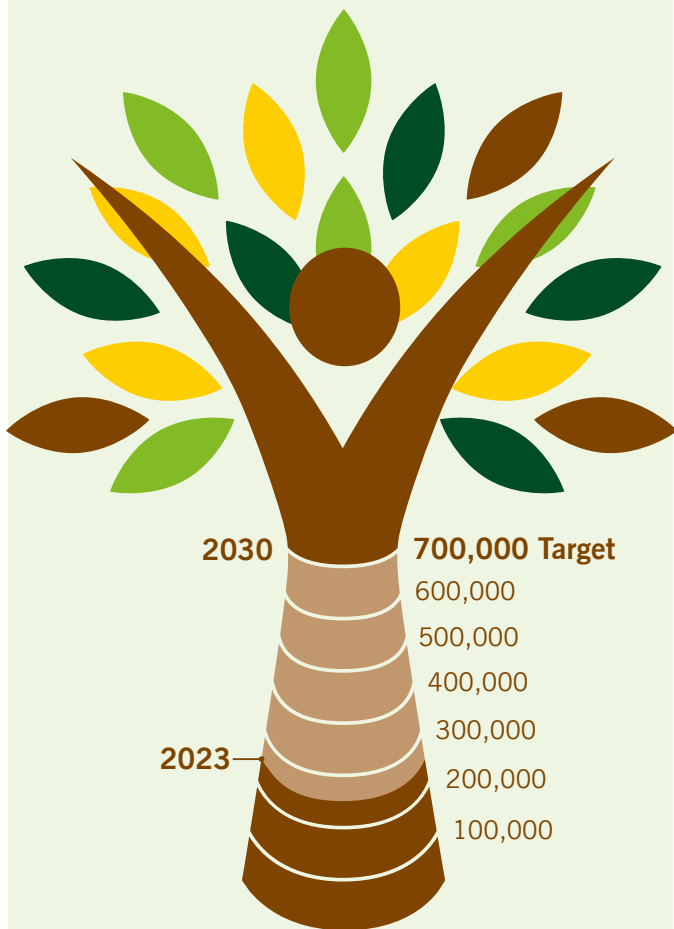
The available data shows that **3,854 hectares** of council land are in better management for nature and include county farms and highway verges. This is equivalent to **97%** of the land that could possibly be suitable.

% of Suitable Council Land in Better Management for Nature



The County Council started the **Urban Wildlife Verge scheme** pilot in **2020**. Since then, the scheme has grown in the number of verges included and the number of parish councils participating. At the end of **2022-23** there were **69 verges** in the scheme managed by **51 parishes**. These verges are managed by reducing grass cutting, which is also done at the best time of the year for wildlife. The grass clippings are removed to provide good soil conditions for wildflowers to thrive. For more information on the scheme go to the [Leicestershire County Council website](https://www.leicestershire.gov.uk).

Number of Trees Planted in Leicestershire



The County Council has set a target to help plant **700,000 trees** in Leicestershire by **2030** as part of its net zero and nature recovery commitments. At the end of **2022-23** some **248,000 trees** were planted across the county by the county council and other organisations and individuals. For more information on this and to keep track of how many trees are being planted visit the [Leicestershire County Council website](#).

Grassland Restoration Project

A project to restore grassland has restored **0.7 hectares** of grassland alongside the **Broughton Astley Leisure Centre** and delivered **4.5 hectares** of grassland restoration at **Watermead Country Park**. The project has also produced a **conservation grazing plan** for land in and around Poole Farm, Quorn. This work was funded by Trent Rivers Trust, WWF, Botanica, and Leicestershire County Council and had a total value of **£46,700**.



Projects on the ground

Celebrating 40 Years of Tree Wardens

In March 2023 Leicestershire celebrated **40 years** of running the Tree Warden network in the county, in partnership with the Tree Council. There are currently **124 Tree Wardens** in the network. The volunteer Tree Wardens are managed by **79 parishes/independent organisations**.



The role of a Tree Warden is diverse and involves: - maintaining trees (watering, weeding, minor tree work like coppicing); checking for pests and disease; looking for places to plant trees; encouraging schools to educate pupils about trees; interpretation of trees through guided walks; checking planning applications to see impacts on designated and non-designated trees. Leicestershire is well regarded by the Tree Council who refer new networks to us for advice and best practice.

Tree Wardens have supported access to Treescape grants by providing evidence of the demand for trees in Leicestershire. They have also helped with data collection for Local Wildlife Site, Ancient Trees and assessing trees for Tree Preservation Orders, as well as helping in the delivery of the council's planting target of 700,000 trees by 2030.

Supporting Orchard Development in Leicestershire

The County Council has taken steps to recognise the value of trees, the biodiversity benefits and the sustainable food production within orchards, by widening the variety of tree species in its [free tree scheme](#) to include fruit trees. During **2022-23** the council supported the creation of **5 new orchards**, including two in schools and three in the community. During **2023-24** we have supported an additional **38 new orchards** including 23 in schools and 15 in the community.

To support the development of orchards the council also delivered three rounds of a **'Designing an Orchard'** course, with **58** members of the public taking part. The course was part funded by the [Charnwood Forest Landscape Partnership Scheme](#).

